

Larger Than Life

An exhibition of contemporary textiles by members of the **Fibre Artist's Network (FAN)**

This whole gallery exhibition brings together 31 textile artists who work in a range of styles. All artworks are uniform in size (75 x 100cm), and are either portrait or landscape orientation.



Sue Whittaker

Work is in the form of wall hangings or framed canvasses, and includes techniques such as embellishments, printing, stamping, painting, fabric collage, machine and hand stitching, as well as fabric manipulation or distortion.

The artists were given the theme of 'Larger than Life' to ignite their imagination and to create bold, original pieces of work. They have interpreted this wide and diverse subject in their own unique style.



Francie Mewett

When this theme was researched, it was discovered that 'Larger Than Life' was used to describe people like Winston Churchill, even the Beatles, the Rolling Stones, and Robin Williams. Many other types of artists have also been described this way.

The dictionary describes 'Larger Than Life' as an adjective "for something or someone that is exceedingly imposing, impressive or memorable."

Nature has many and varied examples of 'Larger Than Life', from animal to plant life.

The spectacular plant life photographed under electron microscopes shows how amazing nature is, and how this theme could be interpreted.



Cathy Boniciolli

Some of the artists are current and former students from accredited vocational courses run at Marden Senior College; others are well-known textile artists who have exhibited locally, nationally and internationally.

The artists continue to develop their art practice through attendance at workshops and participation in public exhibitions.

Many also belong to other organisations such as local Guilds, RSASA and the T'Arts Collective. Some are professional art teachers or people who run classes and workshops locally and interstate.

The Fibre Artists Network (FAN) is informally structured but members gather at least four times each year. Artists often work in isolation and therefore

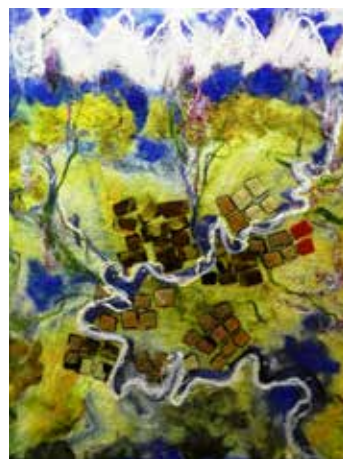


Suzanne Gummow

FAN meetings provide a vital opportunity for networking and keeping in touch with what is happening locally and in the wider world of textile arts.

Members show their work, discuss challenges and concerns, offer reports on books, resources, recent exhibitions and other activities.

This group came together over twelve years ago and FAN has continued to host workshops and arrange group exhibitions since its inception.



Jennifer Gunson

participating FAN artists:

Jenny Bates
Chris Beardsley
Cathy Boniciolli
Sue Buxton
Margaret Carberry
Liz Collinge
Gem Congdon
Stephanie Eland
Maxine Fry
Ruth Galpin
Rosi Gates
Suzanne Gummow
Jennifer Gunson
Julie Haddrick
Alvena Hall
Karlyn Hanchard
Joy Harvey
Michelle Jahn
Pam Kelly
Annette McRae
Francie Mewett
Sandra Obst
Gill Oswald-Jacobs
Francesca Portolesi
Sue Prothero
Vicki Smith
Liz Steveson
Jan Strachan
Sue Whittaker
Dianne K Wood
Victoria Yurkova

ARTIST DEMONSTRATIONS

2pm, Sunday 22 July

Stephanie Eland
& Liz Collinge

2pm, Sunday 29 July

Francie Mewett

A chance to see the artists at work, and discuss their techniques.

All welcome, free entry

'Larger Than Life' will be officially launched by

Rebecca Evans

Curator of European & Australian Decorative Arts, Art Gallery of SA

6.30pm, Friday 13 July

Free entry, all welcome

GALLERY M diary

Sunday 8 July
CLOSE OF CURRENT EXHIBITIONS

13 July - 5 August

WHOLE GALLERY

- ▶ *'Larger than Life'*
textile artworks by artists from the
Fibre Artists Network (FAN)

ARTIST DEMONSTRATIONS

2pm, Sunday 22 July
Stephanie Eland & Liz Collinge

2pm, Sunday 29 July
Francie Mewett

Free entry, all welcome

10 August - 2 September

WHOLE GALLERY

- ▶ *'Gallery M Open Contemporary Art Prize'*
Artworks in various media by selected
South Australian contemporary artists
*This art prize exhibition is an initiative of
Gallery M & Jarrah J Holmes, Century 21*



SALA

7 - 30 September

THREE EXHIBITIONS

- ▶ *'Plus One'*
Artwork in various media by members
of the **Red House Group Inc**,
plus a selected junior artist with whom
the member has a connection.
(HALF GALLERY)
- ▶ *'Les Fleurs du Printemps'*
paintings by **Nicole Jusserand**
(QUARTER GALLERY)
- ▶ *'Limited Edition'*
relief prints by
**Kate Foster, Ros McDougall
& Hazel Harris**
(QUARTER GALLERY)

talking shop



(left)
handmade fired stoneware bowl
by
Wendie Shephard
from \$20 each

GET BOWLED OVER



(above)
kiln fired glass bowl
by
**Lorraine
Zabrowarny**
\$65



(above)
handmade ceramic bowl
by
David Woolaway
\$35



(right)
handcrafted
Silky Oak bowl
by
Brad Ryan
\$70



(left)
handmade porcelain bowl
by
Lush For Life
\$65

STILL AVAILABLE AT GALLERY M

The 2018/2019 Adelaide Entertainment™ Book



Still Only
\$70
giving you over
\$20,000
of value!

Please support Gallery M with this major fundraiser.



facebook.com/
gallerym287

Instagram/
gallerym_287



Gallery M is proudly operated by the Red House Group Inc. on behalf of the City of Marion
A City of Marion Cultural Development Project



Gallery M Hours: Monday to Saturday: 10am - 4pm; Sunday: 1 - 4pm. Closed Public Holidays